

- ASHA Convention
- Keynote Speaker
- Metro Symposium 2009

UPCOMING REGISTRATION

*Metro Speech
Language Network
Symposium is
February 6th & 7th,
2009!*

Individual Highlights:

- Keynotes-2009 2
- Continuing Ed 3
- SEALs report 3
- Upcoming events 4
- Registration
- About Us 6

Report from the ASHA

Annie Glenn and Senator John Glenn introduced the dazzling star of Broadway and films, Julie Andrews, honored as the recipient of the "Annie". Mrs. Glenn is a known advocate for those with communication disorders. Mrs. Glenn presented the "Annie", so named for the unbeatable courage she exemplified in her own struggle with stuttering. Julie Andrews entranced the award ceremony attendees with her incomparable grace and charm, as she shared with the audience her life's work, love of the arts and children's literature.

"Children's literature and the arts represent strong passions for me and I have spent much of my life dedicated to both of them"
Julie Andrews

FRIDAY KEYNOTE SPEAKER

Innovations for Addressing Mild Articulation Errors in School Settings Jennifer Taps, M.A., CCC-SLP

Jennifer Taps, our featured keynote speaker for Friday, is a Senior Speech-Language Pathologist in San Diego Unified School District and an Indiana University graduate. She provides classroom intervention to caseload and at-risk students. Jennifer is also the Coordinator for the Articulation Resource Center, conducting research and supporting SLPs in articulation and phonological treatment through staff development and coaching.



WHAT YOU WILL LEARN

- Procedures to reform service delivery to children with single sound differences
- Utilize evidence based intervention techniques for remediating single sound errors in 20 hours or less
- The impact of reform on workload management

Waves of Change... Oceans of Opportunities

With the many changes and challenges our professions face, the Metro Speech-Language Network has been working tirelessly to provide you with the insights and information to ride the waves of change and toward the opportunities that will make a difference for students, families and SLP's. We are confident that the variety of program sessions will allow you to return to work the following days energized and ready to apply these new skills.

"Pleasure in the job puts perfection in the work"
Aristotle



SATURDAY MORNING SHORT COURSE 8 AM -12:30 PM

Featured Short Course Speaker

TIM KOWALSKI, MA, CCC-SLP

Asperger’s Syndrome

WHAT YOU WILL LEARN

- Characteristics of and techniques to address social communication
- Characteristics of and techniques to address social interaction deficits
- Characteristics of and techniques to address social emotional regulation

This course is designed to educate participants about Asperger’s Syndrome and provide practical skills for effective assessment and intervention. Attendees will be able to identify and obtain skills-based techniques designed to address the social interaction, social communication and social emotional concerns present in this population. Attention will be directed towards diagnostic criteria and treatment intervention with numerous opportunities to learn practical strategies to produce positive change in these deficit areas.



ASHA NOTES

This year there were 29 short courses and more than 1800 sessions to choose from with a focus on broadening the Audiology offerings. As a Corporate Sponsor of the ASHA Convention, **EBS Healthcare**, was a definite presence in the exhibit hall meeting with attendee’s and they provided much excitement by partnering with Subaru for a car giveaway! The awards ceremony and the closing party at the field museum were a memorable wrap-up event. EBS is also a proud sponsor of Metro Speech Language Network Symposium.

2009 Metro Symposium Location: The Marriott Denver South at Park Meadows

FEATURES

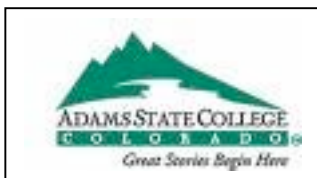
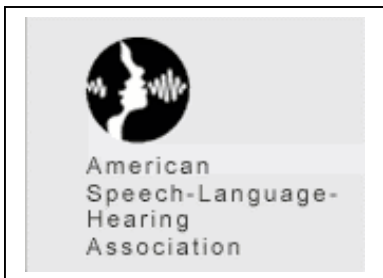
- Concierge Floor
- High Speed Internet Access
- 24 Hour Fitness Center
- Indoor Pool and Whirlpool
- Full Service Restaurant and Lounge



For reservations, contact Denver Marriott South at Park Meadows
 10345 Park Meadows Drive
 Littleton, Co 80134
 1800-686-2767
 303- 925-0004
 FAX: 303-925-0005

Our conference this year is conveniently located at I-25 and Lincoln Avenue in Park Ridge Corporate Center. It is within walking distance to the light rails stop and 5 minutes away from the Colorado Luxury shopping center Park Meadows Mall. A block of “the room that works” has been set aside at a cost of \$79.00 per room. Each room is equipped with a work desk and all amenities designed to pamper you during your stay.

Continuing Education



CEUs are pending ASHA approval.

CEUs will require evaluation and verified attendance to all sessions. Transcripts are available through ASHA at the requester's cost. A certificate of completion will be available.

We are working to provide an opportunity for a 1.5 ASC graduate credit. The pre-conference and primary conference cost combined will be \$77.00. (\$30.00 for pre-conference or \$50.00 for primary conference individually). A reflection paragraph for each attendance session is required to complete registration. Certificate of Completion is available. Attendance is required to complete course requirements. Transcripts available at attendee's request.

CDE will provide a certificate of attendance for all attendees at no cost. Attendance at all sessions is required to fulfill the requirements of CDE credit

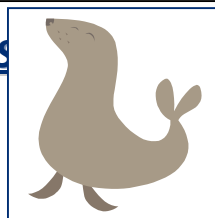
CORPORATE PARTNER & PROVIDER OF ASHA CEU'S

EBS University is responsible for assisting the Metro Speech Language Network in writing the Learner Outcomes for our Metro Symposium to support ASHA CEU's.

EBS is also supporting the symposium by sponsoring our second annual mixer!

Making a difference around the corner and across the globe!

State Education Advocacy Leader: S



SEALS is an advocate group. It's mission is to enhance and perpetuate the advocacy, leadership and clinical management skills of school-based ASHA members at the state and local levels to influence administrative and public policy decisions that affect the delivery of speech language pathology and audiology services in school settings. At the ASHA convention, SEALS were informed about persuasion and negotiation in advocacy. Eileen Crowe and Stephen White presented a Power Point based on Richard Shell's book, "The Art of Persuasion and Negotiation." A new responder group will be formed: SCHOOL PRACTITIONERS INPUT (SPI) Group. These people will serve as a resource to the school services group. This pool of individuals who provide direct services in the school setting will be contacted as issues arise from legislation, regulation committee work and other sources

"Never let the odds keep you from doing what you know in your heart you were meant to do"
 Dr. Jackson Brown, Jr.

*"Limitless like the ocean
are your excellent
qualities"*

The Dalai Lama

December 2008

**Metro Speech-
Language Speaker
Handouts Due**
January 5, 2009

January 2009

**Metro Speech-
Language
Registration
Deadline**

January 16th, 2009



Upcoming events of interest for school based SLPs

And timelines for the 2009 Metro Symposium

There are many continuing education offerings available throughout the year, but school-based SLPs often have limited resources and release time to pursue all the areas of interest and need. Many times an SLP must make his/her small continuing education funds stretch a

long way. With this in mind, we will attempt to provide you with upcoming events that are directed towards the needs and interests of school based practitioners. We are always interested in "getting the word out", so if your district or BOCES is providing an event or an

in service that could be open to other SLPs, please let us hear from you! Networking with your colleagues can be an excellent resource. Here, in the state of Colorado, we have many nationally recognized SLPs.

Colorado Advisory Council Representative

ASHA has reorganized and is no longer electing legislative counselors. Each state has voted for one SLP advisory Council member and one Audiology member to represent the state for input and decisions. Colorado's representative for Speech Language Advisory Council position is. Amy Simmons-Grimm, M.A., CCC- SLP/A. Amy is a Speech Language Pathologist working for Cherry Creek School District. Amy is dually certified as both an Audiologist and a Speech Language Pathologist. Amy's term as Colorado's Advisory Council member expires on December 31st, 2009. Nominations are still being accepted at this time for the upcoming 2-year term. At this time, there is not a candidate for the position of Audiology Advisory Council. Under ASHA's new governance structure, the AC Chairs serve as full voting members of the BOD, for 3-year terms from January 1, 2008 to December 31, 2011. It is important that Colorado school-based SLP's have a voice at the national level. So nominate and vote! For more information regarding ASHA governance contact: www.asha.org/about/Leadership-projects



Metro
Speech
Language
Network

Registration Form
Metro Speech-Language Network
Symposium
 February 6 & 7, 2009

Name: _____
 Job Title: _____
 Employer: _____
 Mailing Address: _____
 City: _____ State: _____ Zip: _____
 Daytime phone: _____
 e-mail: _____
 (please include email to receive a confirmation of your registration)

For Office use only
 Check received: _____
 Date received: _____
 Check Number: _____
 Total Confirmed: _____
 Email Sent (y or n): _____

Registration Options	Price	Make Selection Here (X)
Pre-Conference – Friday 8:00am-2:15pm	\$75.00	
Conference – Friday 3:30pm-10:00pm & Saturday 8:00am-5:00pm	\$150.00	
Conference - Student Rate (Must provide proof of current SLP student status.) *This price does not include the Pre-Conference.	\$125.00	
Late Fee – (If postmarked after January 16, 2009 Add the Late Fee. Payment MUST be received by February 1st.	\$50.00	
Total Enclosed:		

Vegetarian Meals? (Yes or no): _____

Are you interested in being a Moderator at the event? (Yes or No): _____

The Conference and all events will be held at:
 Denver Marriott South at Park Meadows
 10345 Park Meadows Drive
 Littleton, CO 80124
 303-925-0004 or 1-800-686-2767

Mail this registration form and check payable to:
 Metro Speech-Language Network
 PO Box 3946
 Greenwood Village, CO 80155
 Purchase orders will not be accepted.
 On-site registration will not be available.

- There will be no penalty for cancellations received on or before the date 10 days prior to the first day of the symposium (on or before January 27, 2009).
- No refunds will be issued for cancellations received less than 10 days before the first day of the annual symposium.
- Late requests for refunds due to a family emergency only will be considered on a case-by-case basis.
- All cancellations must be sent in writing via e-mail (asimmons@cherrycreekschools.org), fax (720-886-3888 attn: Amy Simmons-Grimm), or regular mail (Metro Speech-Language Network, PO Box 3946, Greenwood Village, CO 80155) and expect confirmation within three days.



METRO SPEECH- LANGUAGE NETWORK

We're on the Web!

See us at:

www.metrospeechlanguagenetwork.org

P.O Box 3946
Greenwood Village, Colorado
80155

About Our Organization...

Mission Statement:

The purpose of this Network is to provide a forum for public school speech-language pathologists to share intervention ideas, assessment tools, network, and be a source of continuing education.

Membership:

Metro Speech-Language Committee members serve on a volunteer basis. They donate their time and energy to accomplish this mission.

Funding Sources:

The Metro Speech-Language Network strives to be financially self-supporting so it can continue with its grassroots efforts. All proceeds from the registration fees collected and money gained through fundraisers is used to finance the convention the following year. Hotel rental, meals and snacks at the convention make up the bulk of our expenses. Various individuals, school, and businesses throughout Colorado donate items for the fundraiser at the conference. **This year we will be changing from our traditional raffle format to a true Silent Auction format.**

A final note:

ASHA's Special Interest Division 16 School Based Issues

Division 16 is now the second largest division in ASHA with 6,000 members. The steering committee headed by Fran Block and Ellen Estomin have put together 3 Ad Hoc committees focusing on Classroom Acoustics, Professional Performance and Grant Writing. There are 2 vacancies on the steering committee for 2009-2011, so consider getting involved. Contact Fran Block at fbk730@northwestern.edu